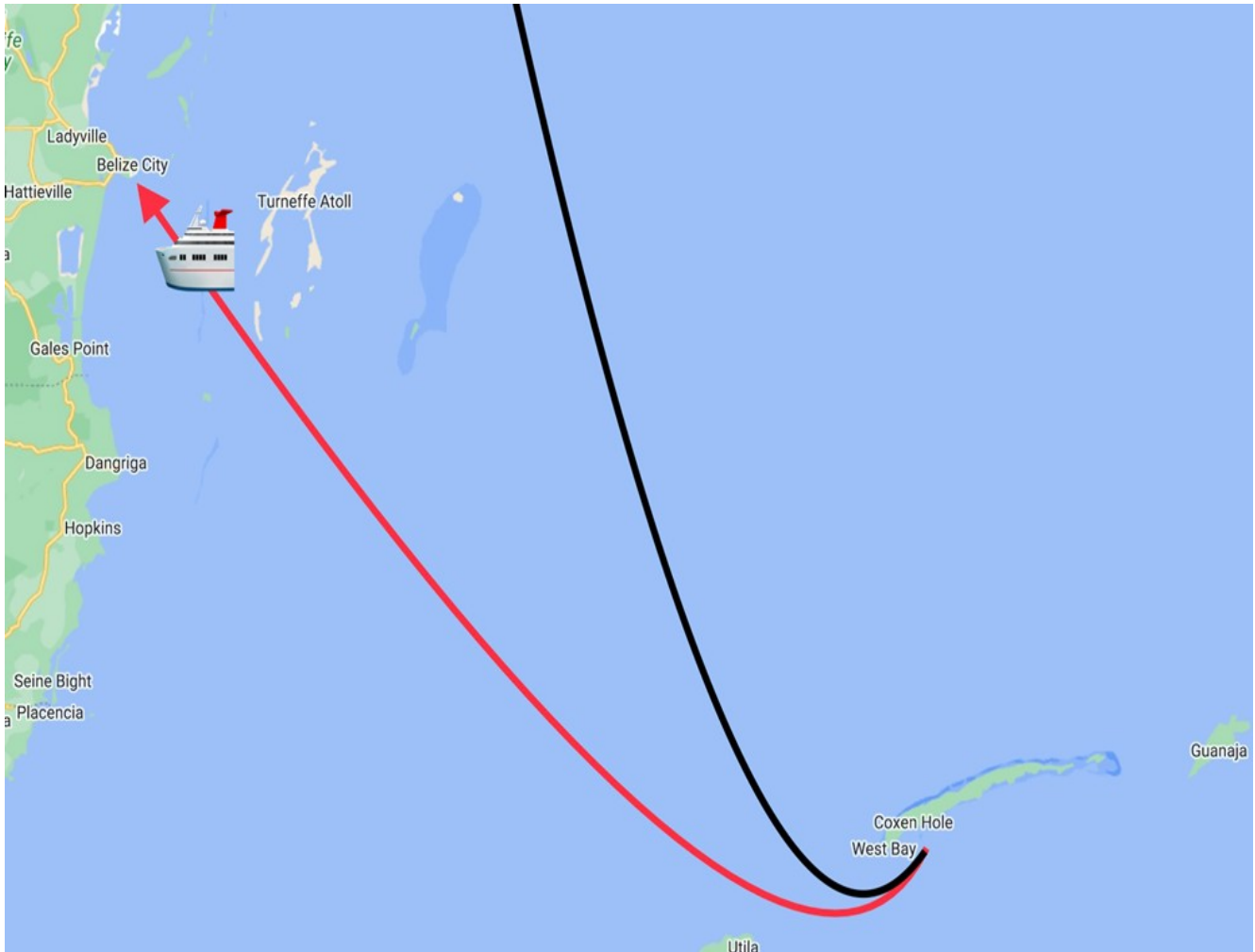


2022, OUTSIDE THE US  
OUT AT SEA 2022- DAY 7

November 9, 2022

Locations: Belize City, Belize

Cruise Day: 5 of 8 (Belize)



. . .

---

So I woke up this morning at 7 to get ready to meet up with the family at 8 in the Windjammer (L11) for breakfast.



Randomly looking out my porthole, I noticed this island with a dock ([English Caye Light](#)) when we passed by it still on our way to Belize this morning.

When I was eating breakfast, I was wondering where everyone was at? I found out shortly after by looking at the clock on the wall, that my phone did not update to the correct local time, and I was an hour ahead. So, thank goodness I hit snooze when I thought it was "6 am" when it was really 5 am, because I would have been up much more earlier than I would have wanted too... and today was a long day.



This fellow waddled in and startled us while we were eating. It was tagged.

When the real 8 am rally rolled around, everyone else naturally started showing up to have breakfast.

Getting off the ship today would be a little different. There are no docks to allow the cruise ship to be right next to it to allow foot exiting access, like the ones in the previous two days. This is due to the protection of coral reefs in that area (Heck Yeah!). So with us about 4 miles away from land, smaller approved boats pick everyone up in an assigned limited groups, so that it is orderly. We waited inside the theater (L5) until the number on your assigned sticker was called (ours was #28, as you will see in the upcoming pictures).



Another sister-ship.

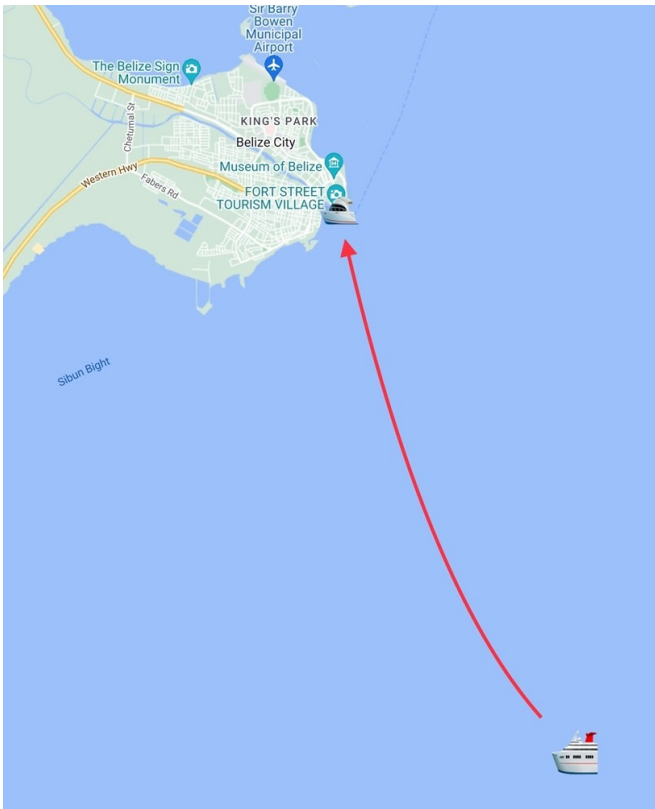




Waiting in the theater

Once aboard the smaller boat, they took us over to dock at the smaller docks at Belize City, Belize.





Our boat is on the left.



Damaged deck of that old pier

There, we unloaded and we didn't have to walk very far to where we were told to go. We also didn't have to wait very long until we all were loaded up on our tour bus.









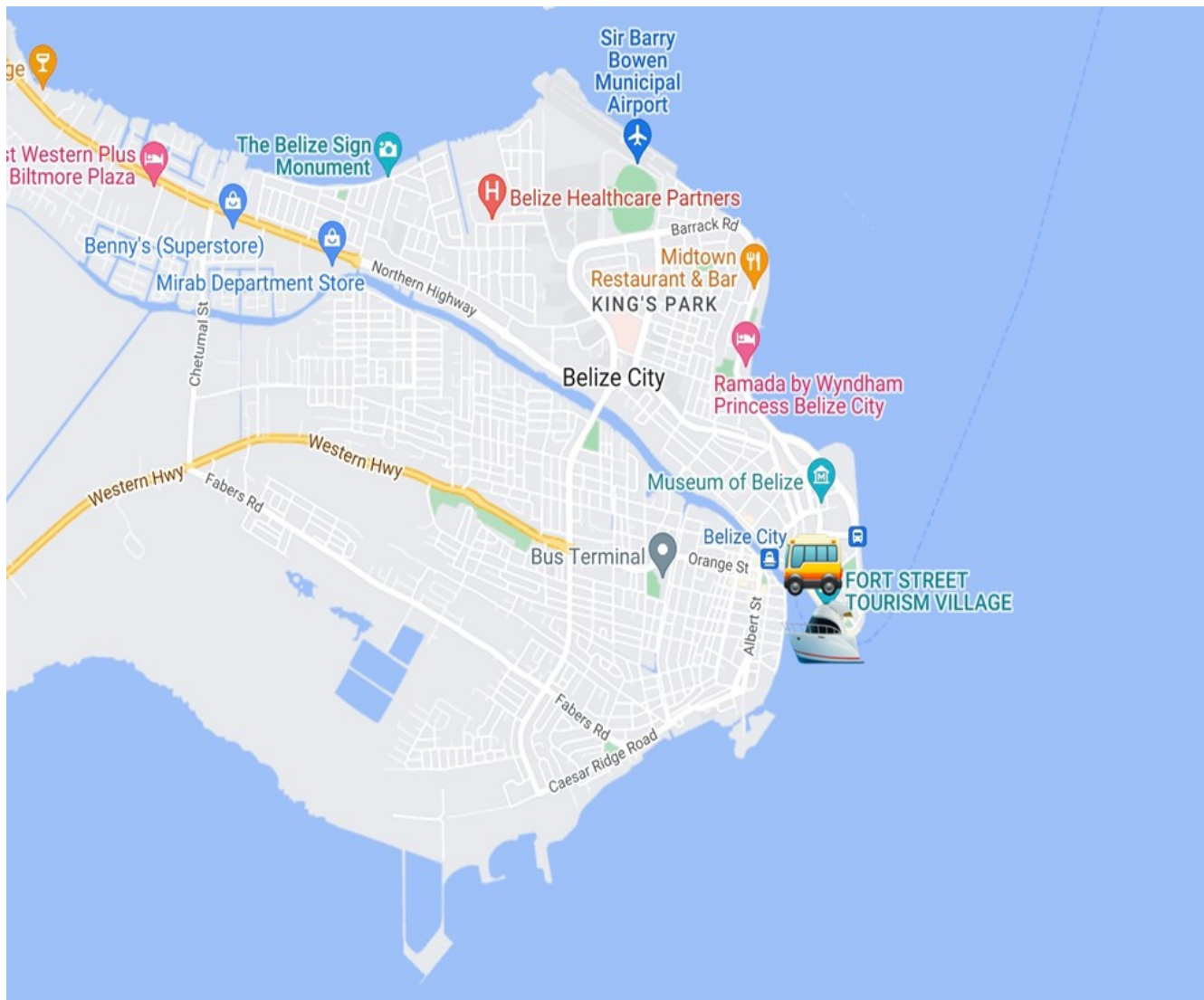
Reminds me of that one co ee company logo.



Wood carvings you walk by.



Pelican carving in the bus building.



Before we made it out of where we loaded up in the bus alley, our bus driver accidentally bumped another bus with our bus's driver side mirror, causing it to come off. Yeah, "you better Belize it" (which caused me to roll my eyes the first time I heard/read that pun).

So in the meantime, they dispatched another bus to meet us where our bus came to a stop in front of a grocery store 3 miles away. We had to wait about 20 minutes before the replacement bus arrived. Plus, this new one had a working microphone to be able to hear our guide, Jay.





View from my window while waiting (grocery store)



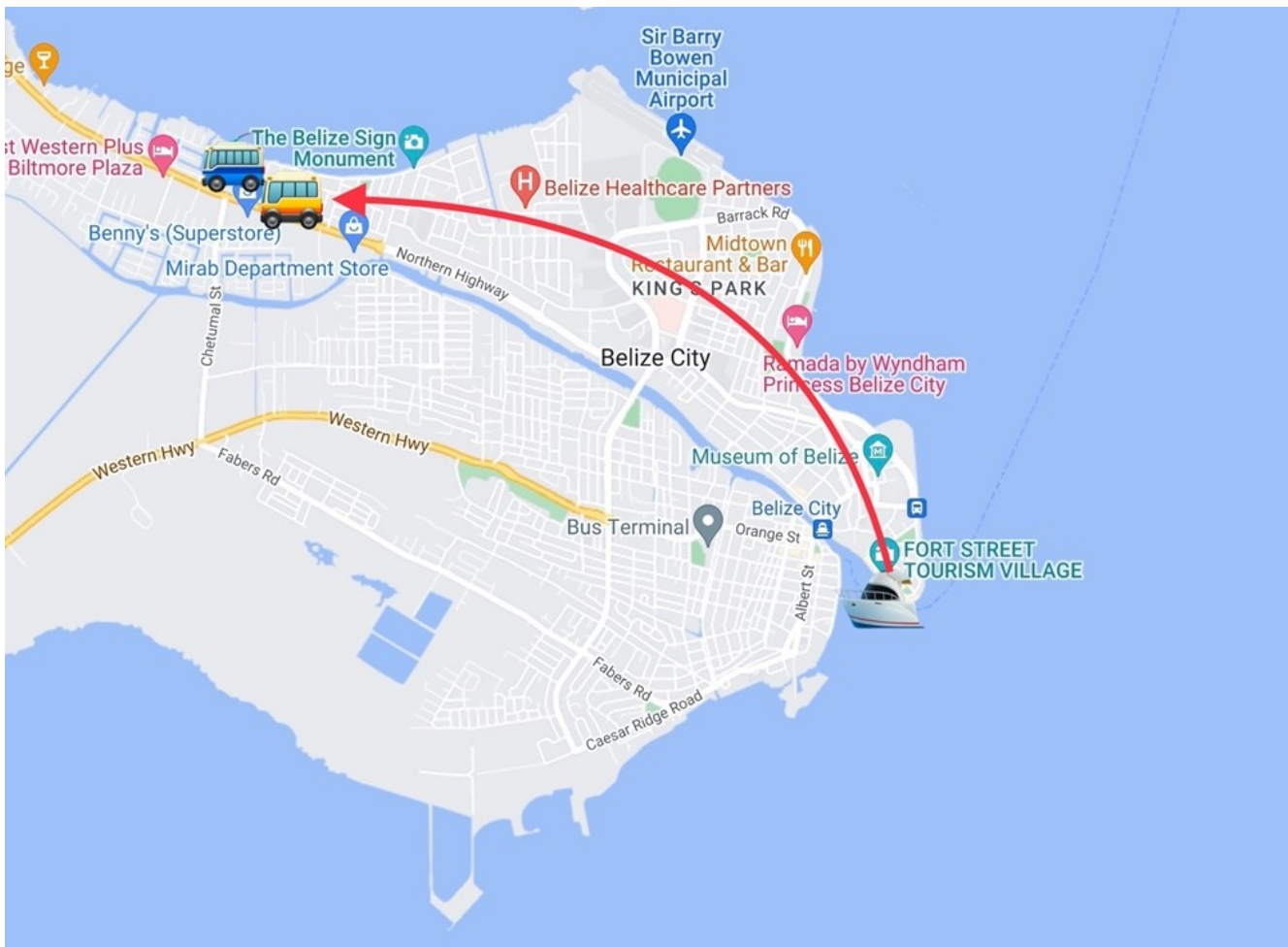
License plate of the bus



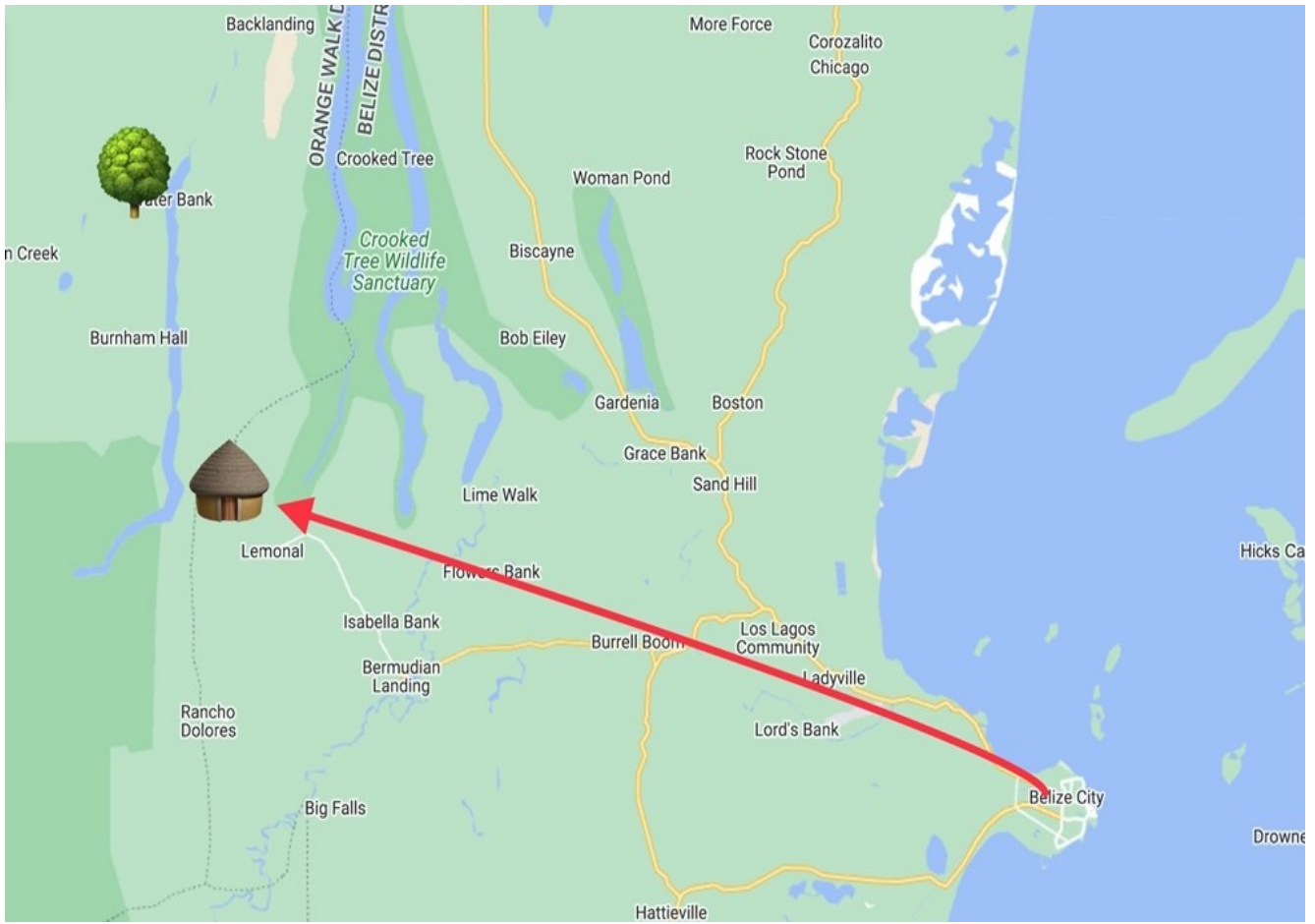
The closest thing to fast food.







The drive after swapping buses to our resort destination was about an hour and a half away. During that drive, they definitely needed to use the microphone to speak, because they presented to us a lot of facts about history, life, animals and foods in and around that country. Almost like giving an oral report in school, but you had to speak a whole 90 minutes! But I was taking it all in, because I love learning about everything... comes in handy for useless trivia games. 😊







One of the many speed bumps you go over, due to straightaway roads.



You would see a damaged and abandoned buildings or houses every so often.



Local elementary school.



Passing over a river.





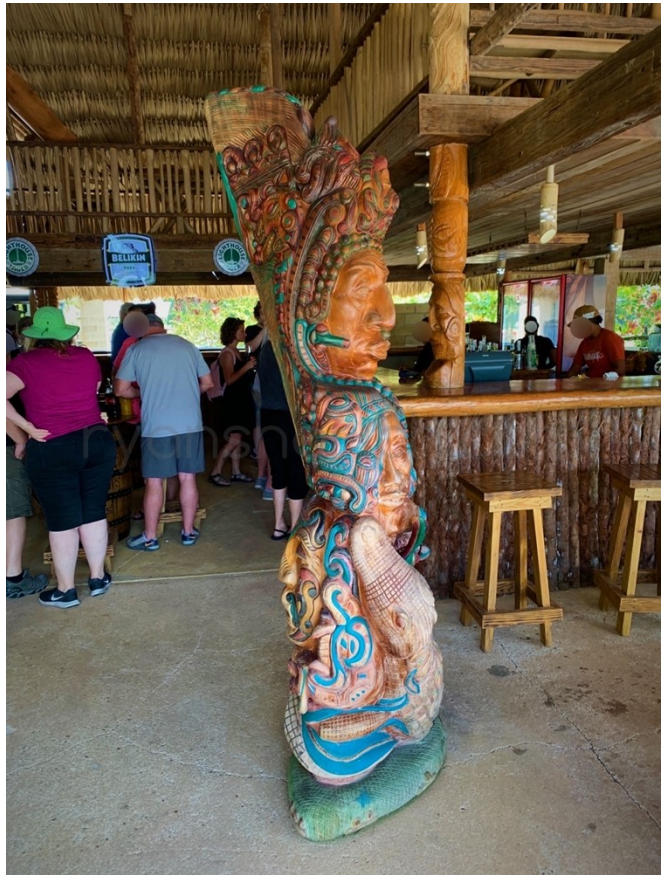
Our bus was taking a wide turn, so I took this opportunity to get this picture of another bus ahead of us.

When we arrived, they let us spend about 15 minutes using the restrooms, checking out the gift shop or resort area, or to get a snack/drink, before we were to get in the speedboat (with life jackets on) to head up the river to see a few Mayan temples. There were a couple other tour buses there with their passengers in/around the buildings.



Ha!





I was in need of caffeine, and so I ordered a Coke in the old glass bottles. My brother and I agree that the Coke products sold outside the US are better because of the different types of sugars they use.





Always...

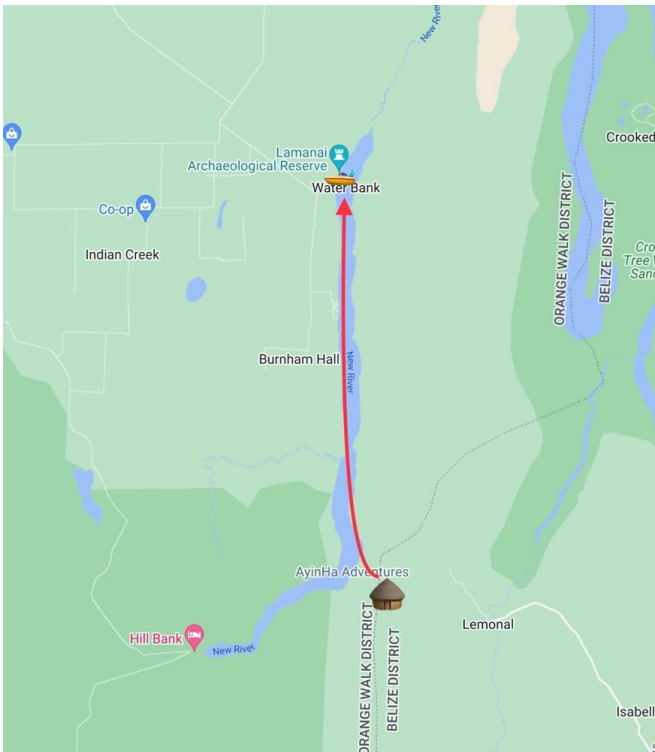
When it was time, we all loaded onto the motorboat ( 4 engines! ), and we ew up the river in that boat to our main destination, the Lamanai Archaeological Reserve ([wiki](#)).



Come and walk on our boat... We've been waiting for you...



Down in front!



Here we go... heading out through the man made canal, to get to the river.





I can feel the boat turning into the river in this picture.



My view behind my sister as we were traveling up the river. The front of the boat is lifting up a little.



Coming up on the small dock near the Mayan temple area.

We arrived at a small dock, unloaded, and began walking in towards the forest area.





Another dock up ahead of ours.



Inglés y Spanish sign





Welcome sign tipped over.



The root system of this type of tree.



Facts about Belize.



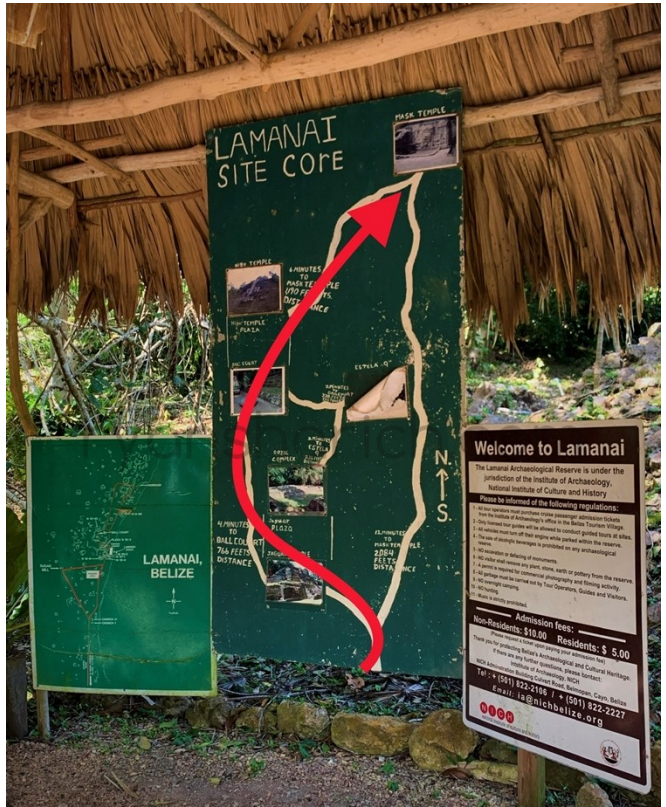


The base of the tree intrigued me.

(Previously) Back on the bus, our guide told us to come up with a word to acknowledge that we are all sticking together near the Mayan Temple grounds, just in case you somehow wandered off on your own or got separated from our group because there were a few other large groups visiting that area as well. It would be used to help keep our group together. So, every time we heard our tour guide say, " *Jay's group...?* ", we would respond with, " *Capice!* "

We walked into the forest area, and walked past the little museum, the map sign and the Jaguar Temple, before we came to the Ball Court. If you ever want to visit this place, you need to have good walking legs because there are no ramps, stairs, and you walk quite a distance. I only say this because I saw a few elderly folks, having trouble with walking the " at easy area" towards the beginning to the sign.





Map of the area that we walked.



The Jaguar Temple from the side.



Access to the Royal Complex.





Royal Complex viewed from the path to the Ball Court





How long the tree leaves and branches get.



Vertical panoramic of the trees.





Coming up on the Ball Court





Second temple, between the trees.

They explained what the Ball Court area was possibly used for setting arguments or choosing the religious sacrifice... both resulted in death. We continued to the next big temple just north of the ball court. The temples here are different from those in Egypt, because they said that these temples have no rooms, they are solid stone. They were mainly used for religious ceremonies or sacrifices.



High Temple Plaza



High Temple





**HIGH TEMPLE  
N10-43**

The Structure N10-43, 33 meters in height, is the tallest structure at the site of Lamanaal and is also one of the largest Preclassic structure in the Maya area. The initial phase of construction for structure N10-43 began in 100BC it was abandoned in the Early Postclassic Period. Special offerings recovered were jade and shell items which had Olmec characteristics.

Institute of Archaeology  
National Institute of Culture and History



High Temple from the side on the way to our third and nal temple.

We didn't spend too long at this temple, because it was for observation only. We continued walking to the 3rd and nal temple.



Hanging branch.



Vine



At this temple, we were allowed to get close to, touch, and even walk up the back and down the front steps to reach ground level. They said that the first of these temples were built around the 16th-10th century BC.



Mask Temple



A fiberglass mold to protect the original face stone.

